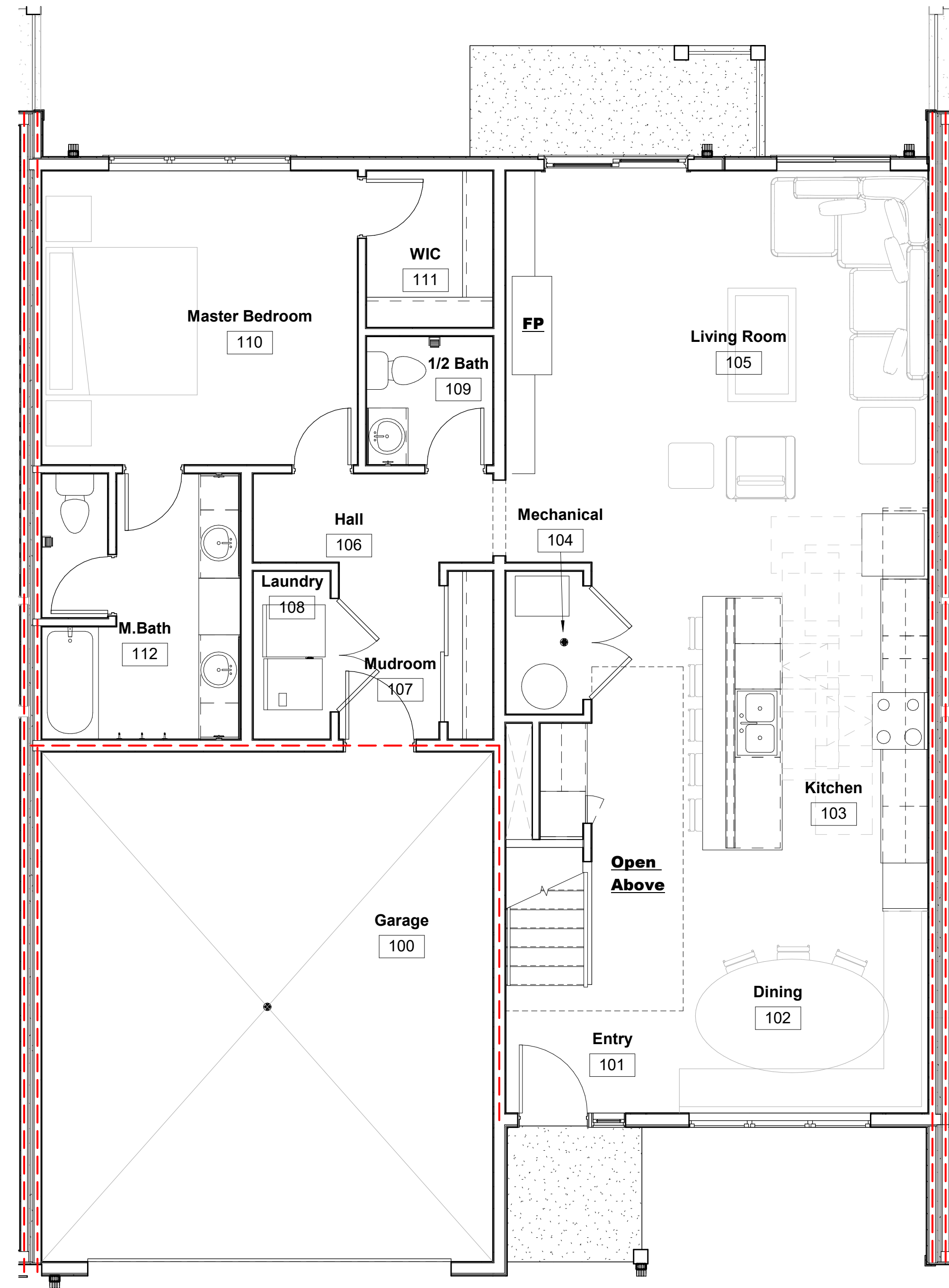
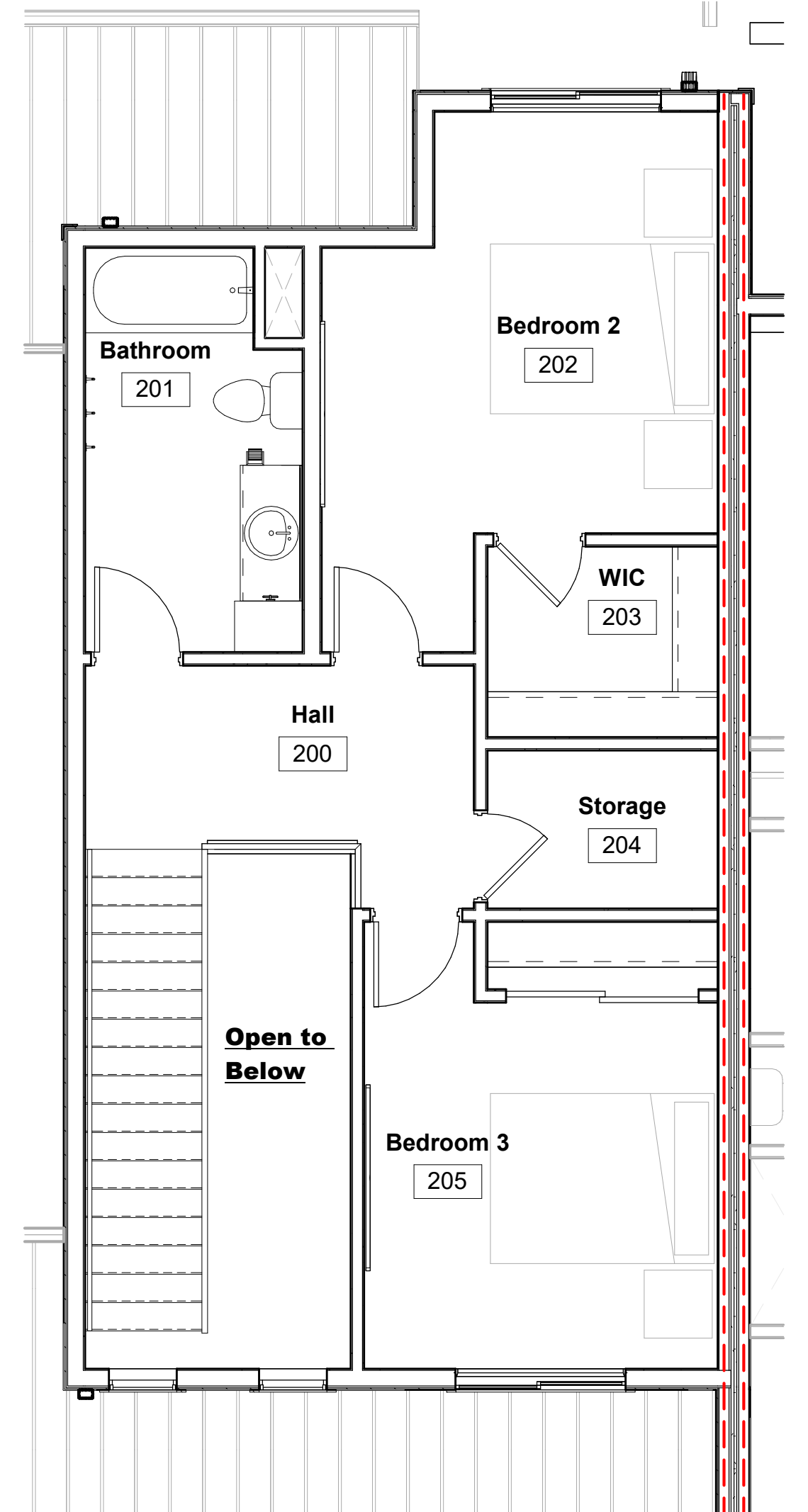


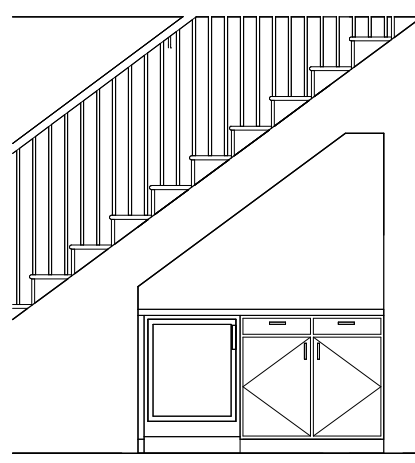
4/12/2025 4:15:21 PM Autodesk Docs://Vermillion Multi-Family/23058 Vermillion Multi-Family - Patio Gable Ends Rework.rvt



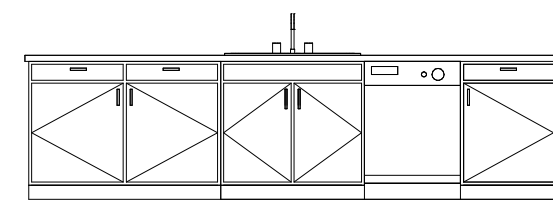
**1 Unit Type 'B' Main Floor Plan**  
Scale: 1/4" = 1'-0" Square Footage : 1,825 SF (with garage)  
1,356 SF (without garage)



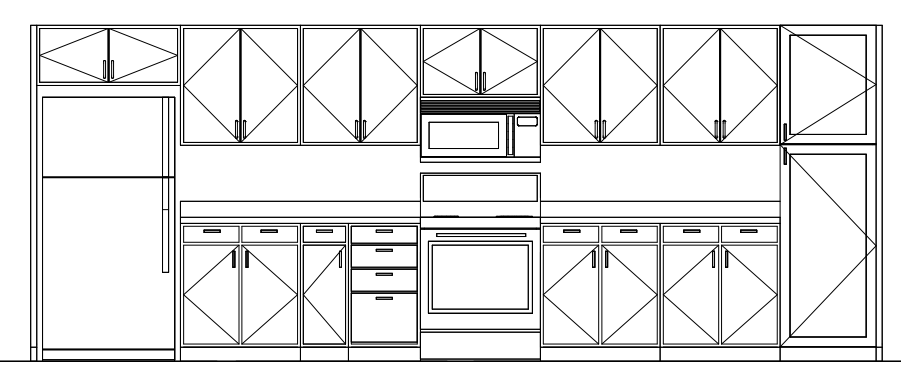
**2 Unit Type 'B' Second Floor Plan**  
Scale: 1/4" = 1'-0" Square Footage : 703 SF



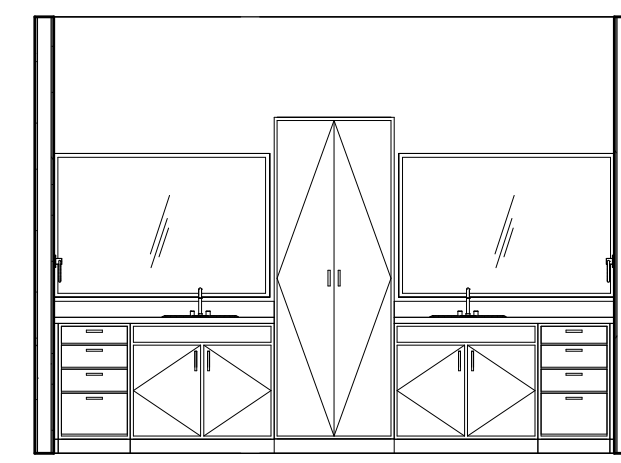
**3 B-Wet Bar Elevation 01**  
Scale: 1/4" = 1'-0"



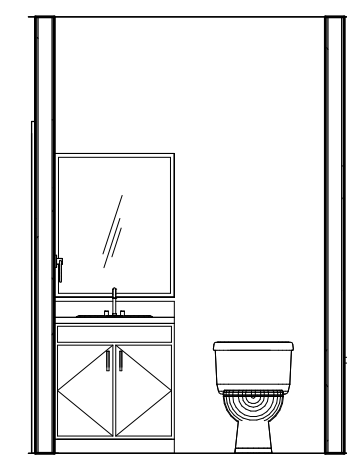
**4 B-Kitchen Elevation 01**  
Scale: 1/4" = 1'-0"



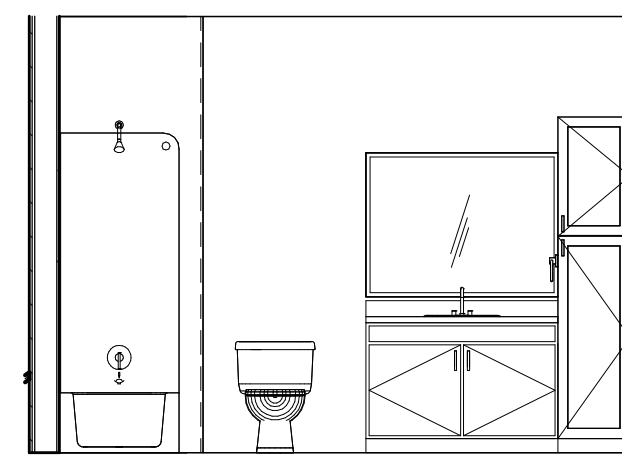
**5 B-Kitchen Elevation 02**  
Scale: 1/4" = 1'-0"



**6 B-M.Bath Elevation 1**  
Scale: 1/4" = 1'-0"



**7 B-Half Bath Elevation 01**  
Scale: 1/4" = 1'-0"



**8 B-Bath Elevation 01**  
Scale: 1/4" = 1'-0"

**PRELIMINARY**  
NOT FOR CONSTRUCTION

**VanDeWalle Architects LLC**  
ARCHITECTURE • PLANNING • INTERIORS  
Sioux Falls, S.D. 605-339-4411

**RCM**  
Reynolds Construction Management  
INCORPORATED

Vermillion Townhomes Phase I  
Cottage Ave. & E. Duke St.  
Vermillion, SD

**Unit 'B'**

COPYRIGHT 2024 ©  
This plan is copyrighted and shall be used only for the building shown and is not to be copied or reproduced without written permission from VanDeWalle Architects LLC.

Project No. 23058	Revisions
Date: 03.01.2024	
Drawn By: CJH	

**A2.3**