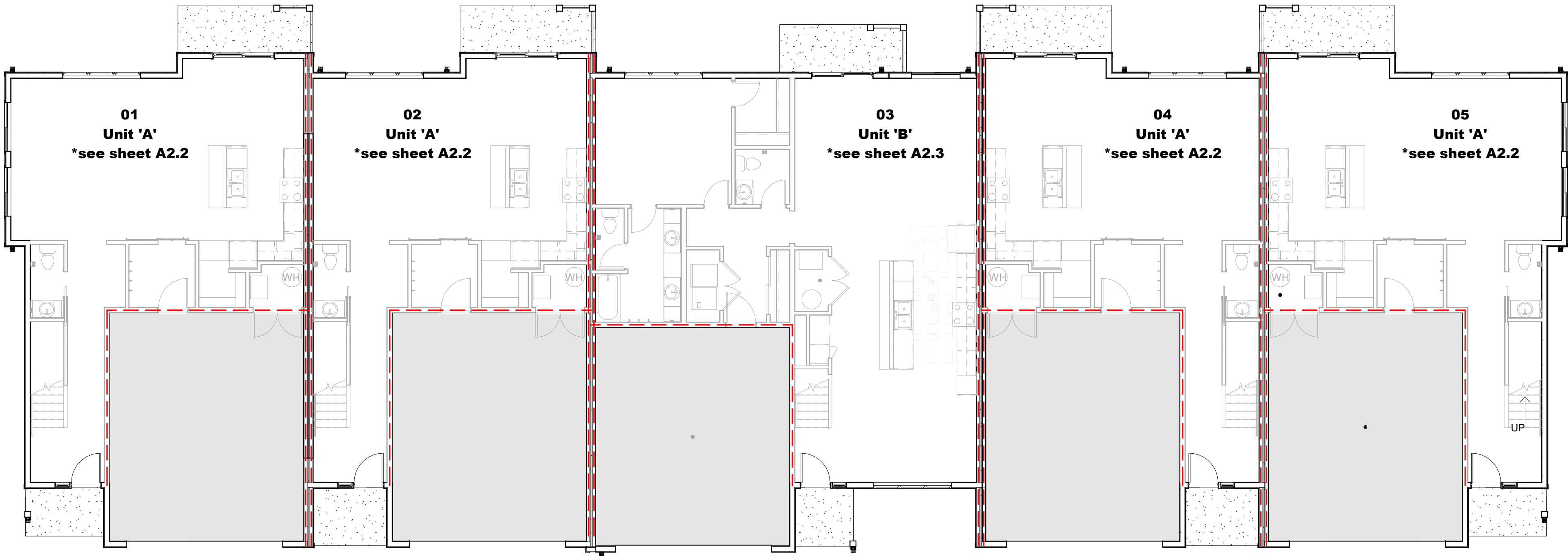


2 Overall 2nd Floor Plan
Scale: 1/8" = 1'-0"

Square Footage: 5,716 SF

- General Notes:**
01. Provide "W" style GWB control joints as recommended by the National Gypsum Association. This includes, but is not limited to, control joints @ 30'-0" o.c. max. in long corridors/wall expanses. Control joints @ door jambs, extending from door head to ceiling. Consideration should also be given to locating control joints from floor to ceiling at either edge of large window openings.
 02. Provide W.R. GWB in all bathroom & laundry areas.
 03. All dimensions are from face of stud, U.N.O.
 04. Caulk perimeter of all tub/shower units, sinks, toilets, & backsplashes.
 05. GWB must run behind tub/shower units to maintain rated assemblies.
 06. Provide alum. 'J' channels @ tub/shower and sheet vinyl flooring. Caulk inside of 'J' prior to inserting vinyl sheet goods into 'J' channel & caulk between 'J' channel @ tub/shower unit.
 07. Verify all appliance dimensions prior to ordering cabinets.
 08. All rated doors to receive smoke seals.
 09. All finishes determined by owner.
 10. Interior elevations are on sheets A2.2 - A2.3.
 11. Door & window schedules/elevations are on sheets A2.2 - A2.3.
 12. Mechanical, electrical, and structural items shown for representation purposes only. Verify final design per trade prior to construction.



1 Overall 1st Floor Plan
Scale: 1/8" = 1'-0"

Square Footage: 7,438 SF

PRELIMINARY
NOT FOR CONSTRUCTION

VanDeWalle Architects LLC
ARCHITECTURE • PLANNING • INTERIORS
Sioux Falls, S.D. 605-339-4411

RCM
Reynolds Construction Management
INCORPORATED

Vermillion Townhomes Phase I
Cottage Ave. & E. Duke St.
Vermillion, SD

Floor Plans

COPYRIGHT 2024 ©
This plan is copyrighted and shall be used only for the building shown and is not to be copied or reproduced without written permission from VanDeWalle Architects LLC.

Project No.	23058	Revisions
Date:	03.01.2024	
Drawn By:	CJH	

A2.0